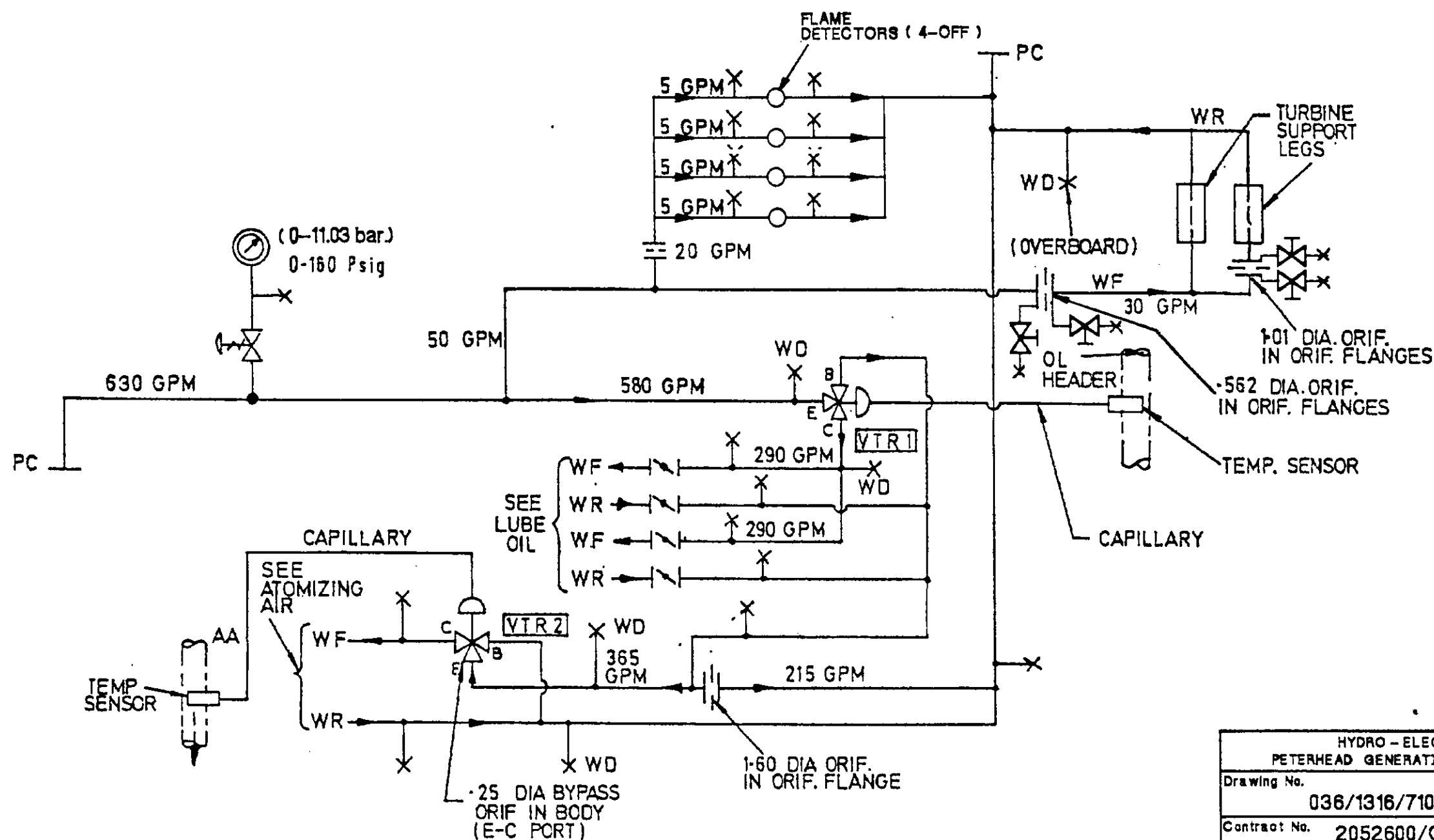


NOTE : SEE DEVICE SUMMARY FOR
CONTROL DEVICE SETTINGS



HYDRO - ELECTRIC PETERHEAD GENERATING STATION		
Drawing No.	Sht. No.	Re
036/1316/7106	01	
Contract No.	2052600/C01	

1	SYMB. PIPING	277A2415
ITEM	DESCRIPTION	DOCUMENT N°
LIST OF COMPLEMENTARY DOCUMENTS		

TAKEN FROM B11688 REV. B

WEIGHT IN Kg		SIMILAR TO		Drawn	J.McCOLL	19/11/88.	SCALE		JOHN BROWN John Brown Engineering Limit Glydebank, Dunbartonshire G81	
REV A	830GPM WAS 810GPM. J.McCOLL 28-7-90	REV B	VALVES DELETED FROM BRANCH TO FLAME DETECTORS. VALVES ADDED TO ORIF. FLGS. ON RUN TO SUP. LEGS. S.A.L. 29-1-91	Checked	<i>J. McColl</i>	19-1-90	M.L. SECTION	0420		
REV		REV		Approved			TITLE <u>SCHEMATIC PIPING DIAGRAM</u> <u>COOLING WATER.</u>		DRG. No <u>0998-0420</u>	
				ENGINEERING APPROVAL					B12622.	
				Mech.					SHEET No 1 OF 1 SHEETS	
				Elec.						